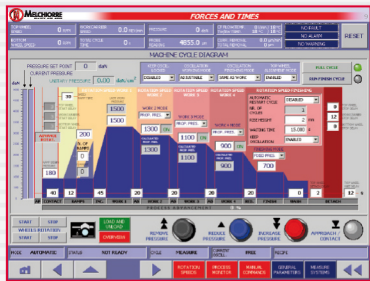


ELC 2000

FINE GRINDING



ELC 2000

FINE GRINDING



> TECHNICAL FEATURES

Machine overall dimension

- width: ~ 4400 mm
- depth: ~ 3400 mm
- height: ~ 4800 mm
- weight: ~ 35 tons

Work-carriers Version Diameter

- 6 work-carriers: working-diameter 630 mm
- 5 " " : " " 720 mm
- 4 " " : " " 800 mm

Technical Features

- wheels speed: 90 rpm
- max dynamic force: 5000 daN
- power total: ~ 200 kW

Wheel Technical Specifications

- outer diameter: 2000 mm
- inner diameter: 870 mm

